

PAFILIA
PLAZA

A PIONEERING PROJECT SITUATED AT THE HEART OF PAPHOS.

- 8 levels high
- Ground floor facilities including gym
- Central location within walking distance to
 - Banks
 - Supermarket
 - Harbour
 - Mall
 - University of Beirut
 - Hotels, Cafes, Restaurants
 - Beaches
- Modern architecture
- Communal pool & gardens
- Sea views
- Spacious balconies

0.75 KM to the sea

LOCATION LINK

<https://goo.gl/maps/XeiybCmTVwMuUhyt9>



LOCAL AREA

ARIEL VIEW FROM PAFILIA PLAZA PLOT

PAPHOS
ARCHAEOLOGICAL
PARK

PAPHOS
LIGHTHOUSE

FABRICA
HILL

LIGHTHOUSE
BEACH

TOMB OF THE
KINGS AVENUE

KINGS AVENUE
MALL

ELYSIUM
HOTEL

TOMB OF THE
KINGS



LOCAL AREA

ARIEL VIEW FROM PAFILIA PLAZA PLOT

ANTASIA
BEACH CLUB

ALMYRA
HOTEL

ANNABELLE
HOTEL

MUNICIPAL
BATHS

SEASIDE
RESTAURANTS
AND CAFES

PAPHOS
PROMENADE

PAPHOS
CASTLE



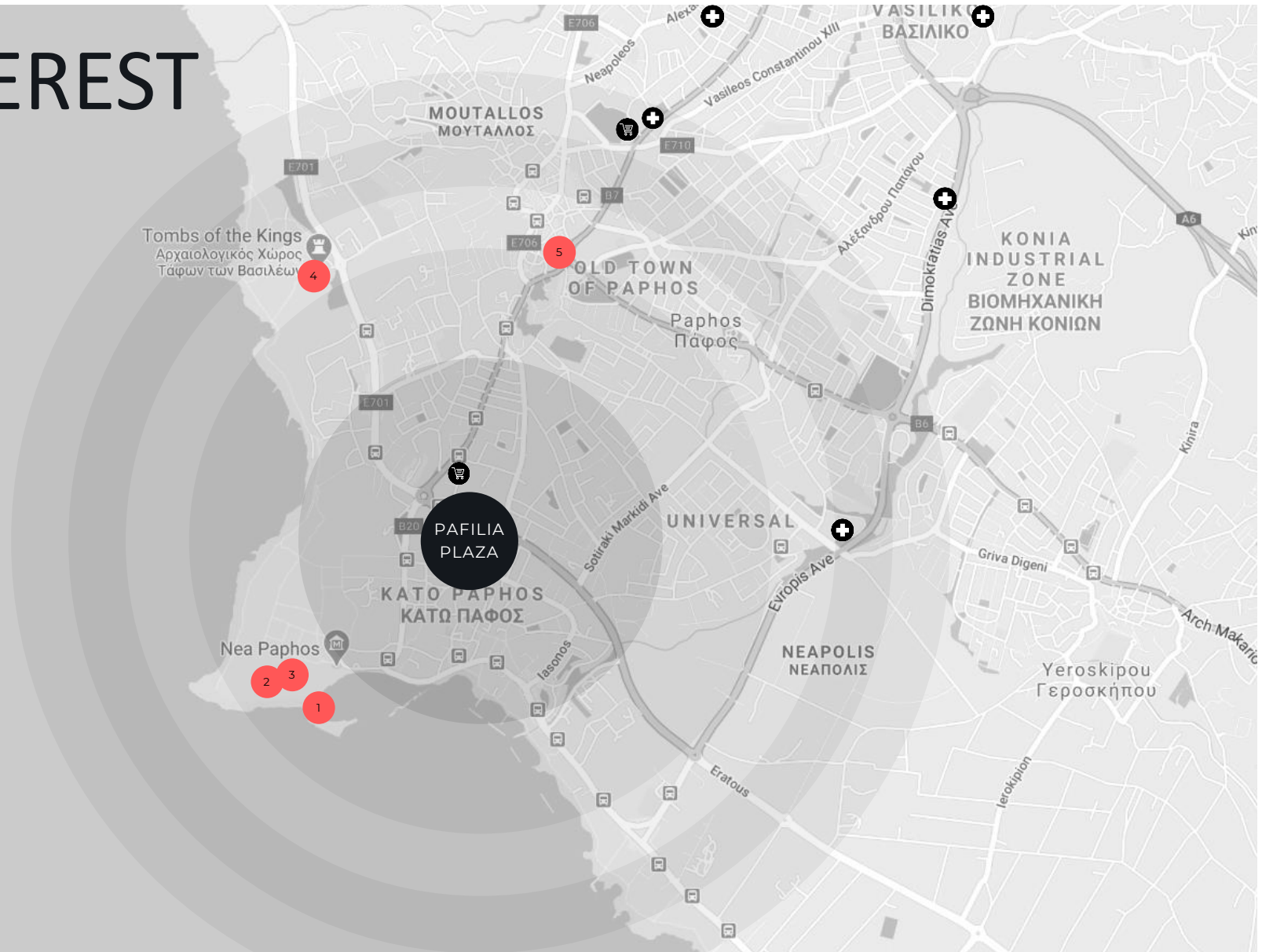
PLACES OF INTEREST

1. Paphos Castle
2. Kato Paphos Archeological Park
3. Paphos Mosaics
4. Tomb of the Kings
5. Town Centre

A GREAT LOCATION

Shopping 3mins
Town Center 6mins
Hotels 4mins
Highway 10mins
Beach 4mins
Bank 3mins
Port 3mins
Paphos airport 12mins
Larnaka airport 80mins
Troodos 73mins
Limassol 40mins
Nicosia 95mins

-  PRIVATE SCHOOLS
-  SUPERMARKETS
-  HOSPITALS



PROPERTY DETAILS

Property	Type	Bedrooms	Bathroom	Covered Balcony	Internal Covered Area	Total Covered Area m ²	PRICE Exc VAT
A 302	Apartment	1	1	14.00	50.00	64.00	380.000€

KEY FEATURES:

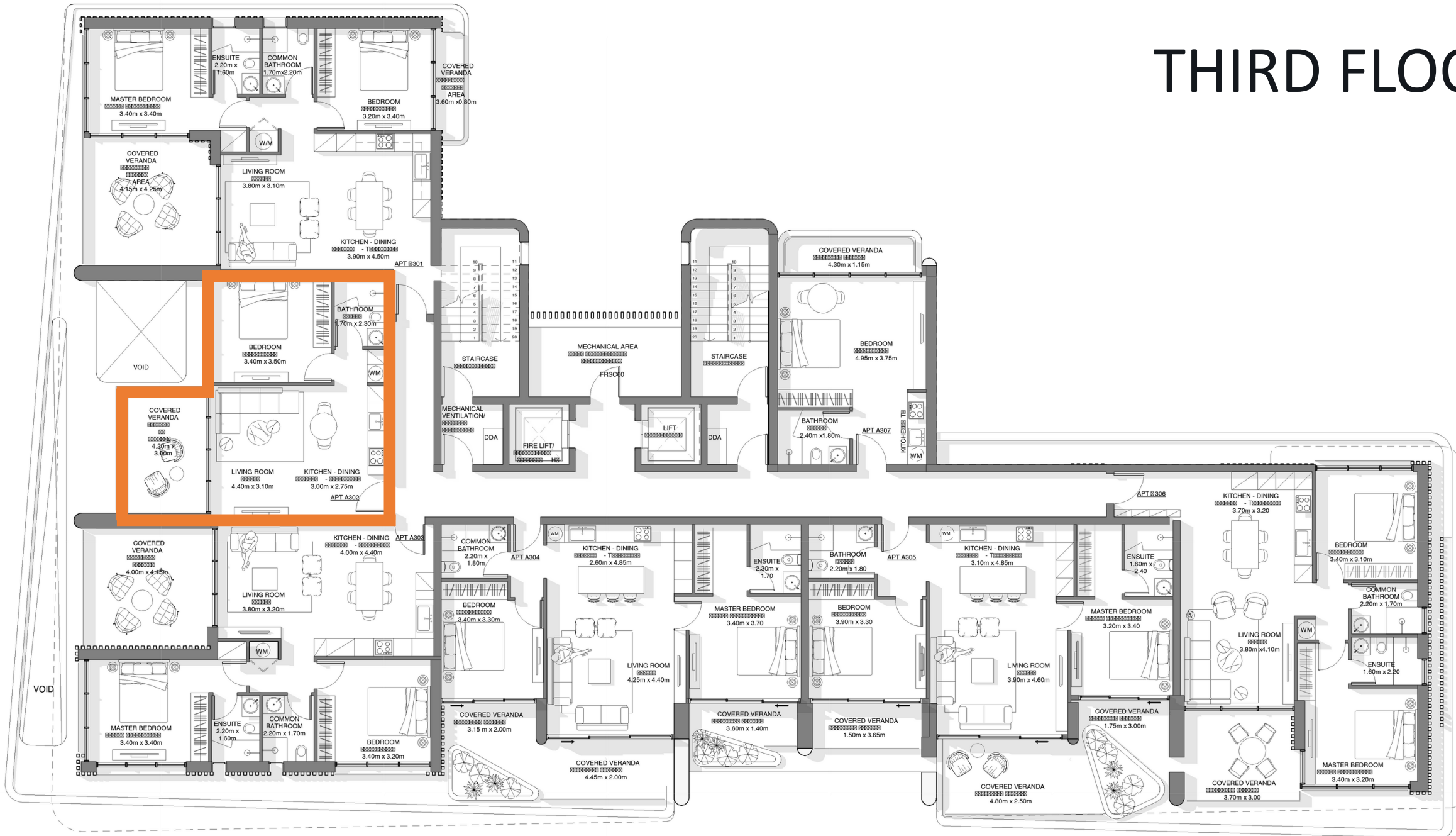
- Underground parking
- Underfloor heating
- Concealed VRV heating & cooling

MASTER PLAN



Delivery January 2026

THIRD FLOOR



UNOBSTRUCTED VIEWS



22.20m
LEVEL 08

19.20m
LEVEL 07



16.20m
LEVEL 06

13.20m
LEVEL 05



10.20m
LEVEL 04

7.20m
LEVEL 03



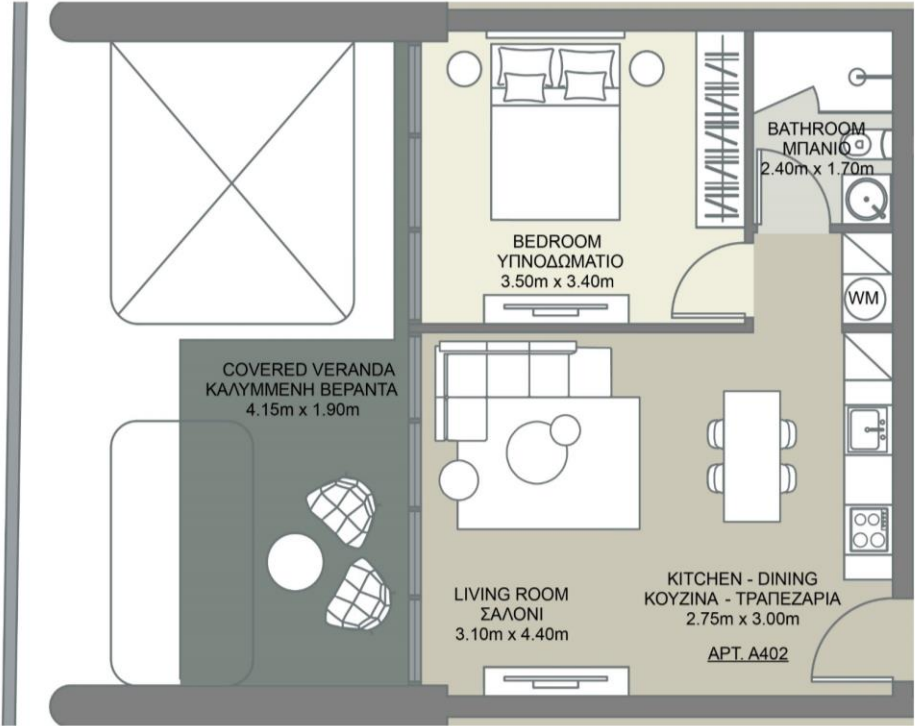
4.20m
LEVEL 02

1.20m
LEVEL 01



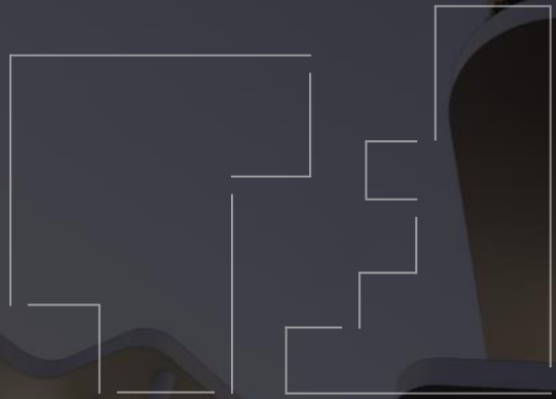


TYPICAL ONE BEDROOM LAYOUT









PAFILIA
PLAZA